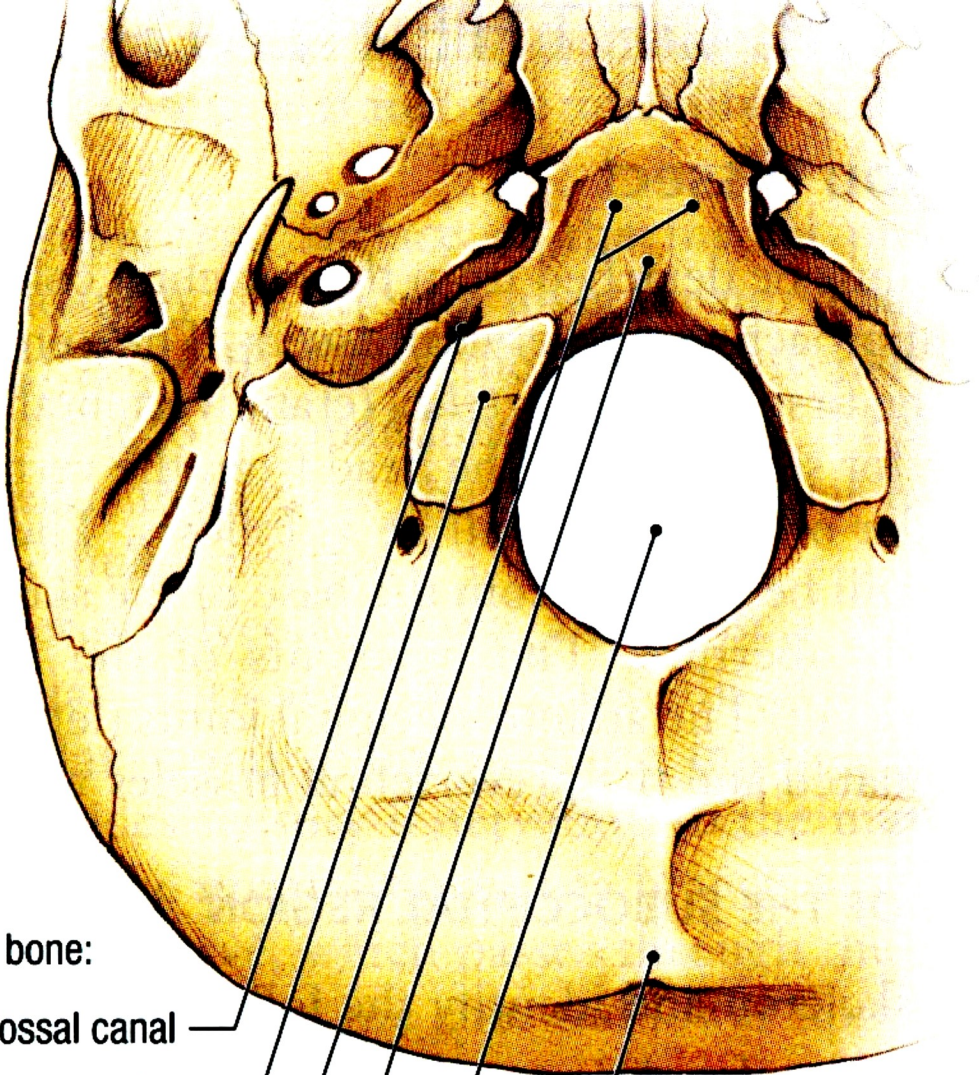


Figure 7.61. Skeleton and ligaments of the atlanto-axial joint.



Occipital bone:

Hypoglossal canal

Occipital condyle

Basilar part

Pharyngeal tubercle

Foramen magnum

External occipital protuberance

Figure 7.62. Occipital bone, inferior view.

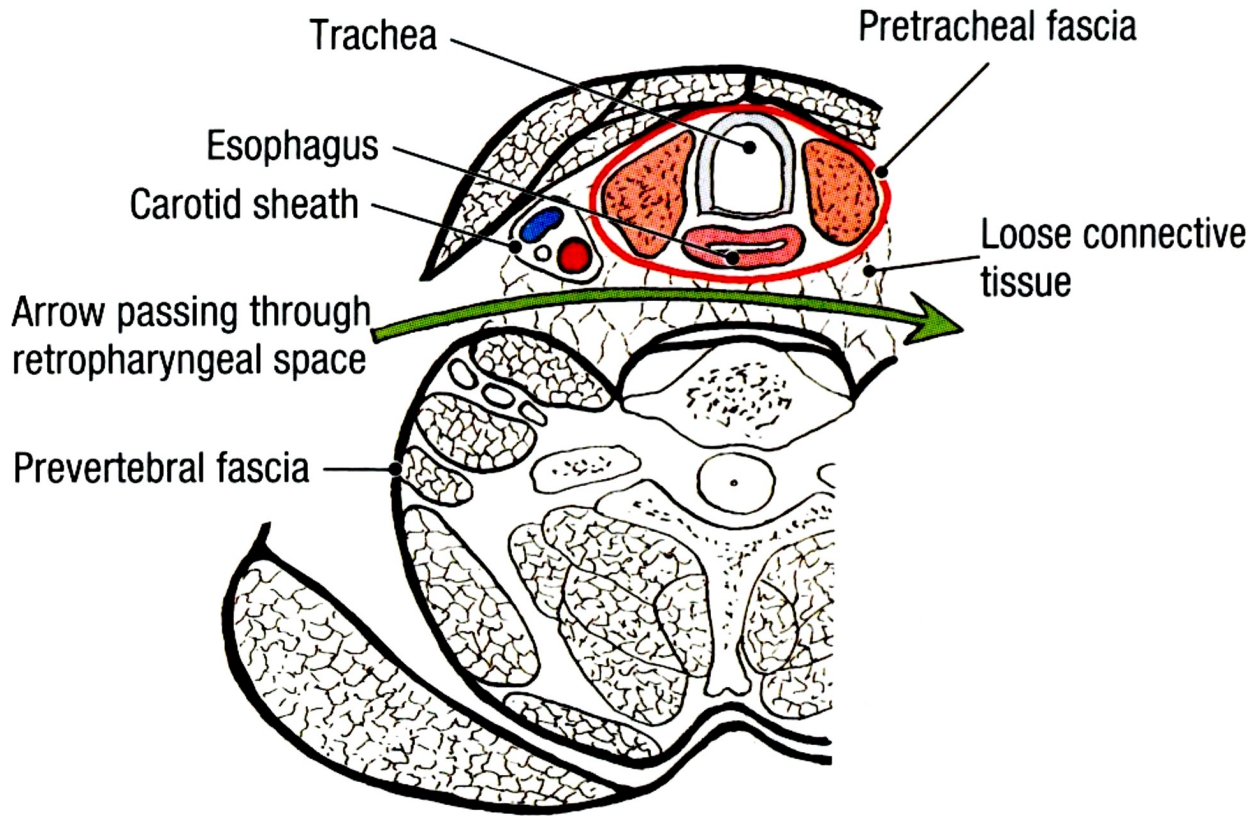


Figure 7.63. Transverse section through the neck.

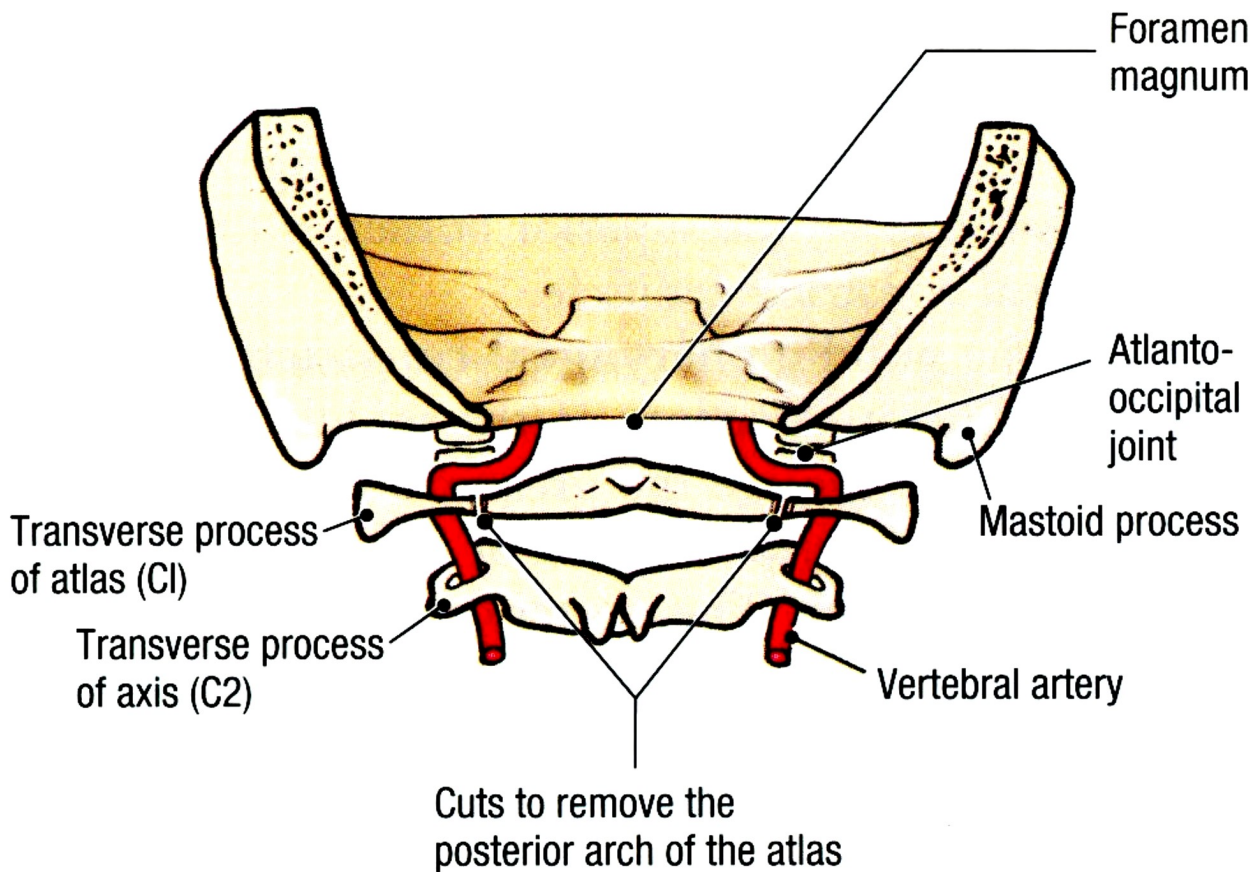


Figure 7.64. Atlanto-occipital joint in posterior view.

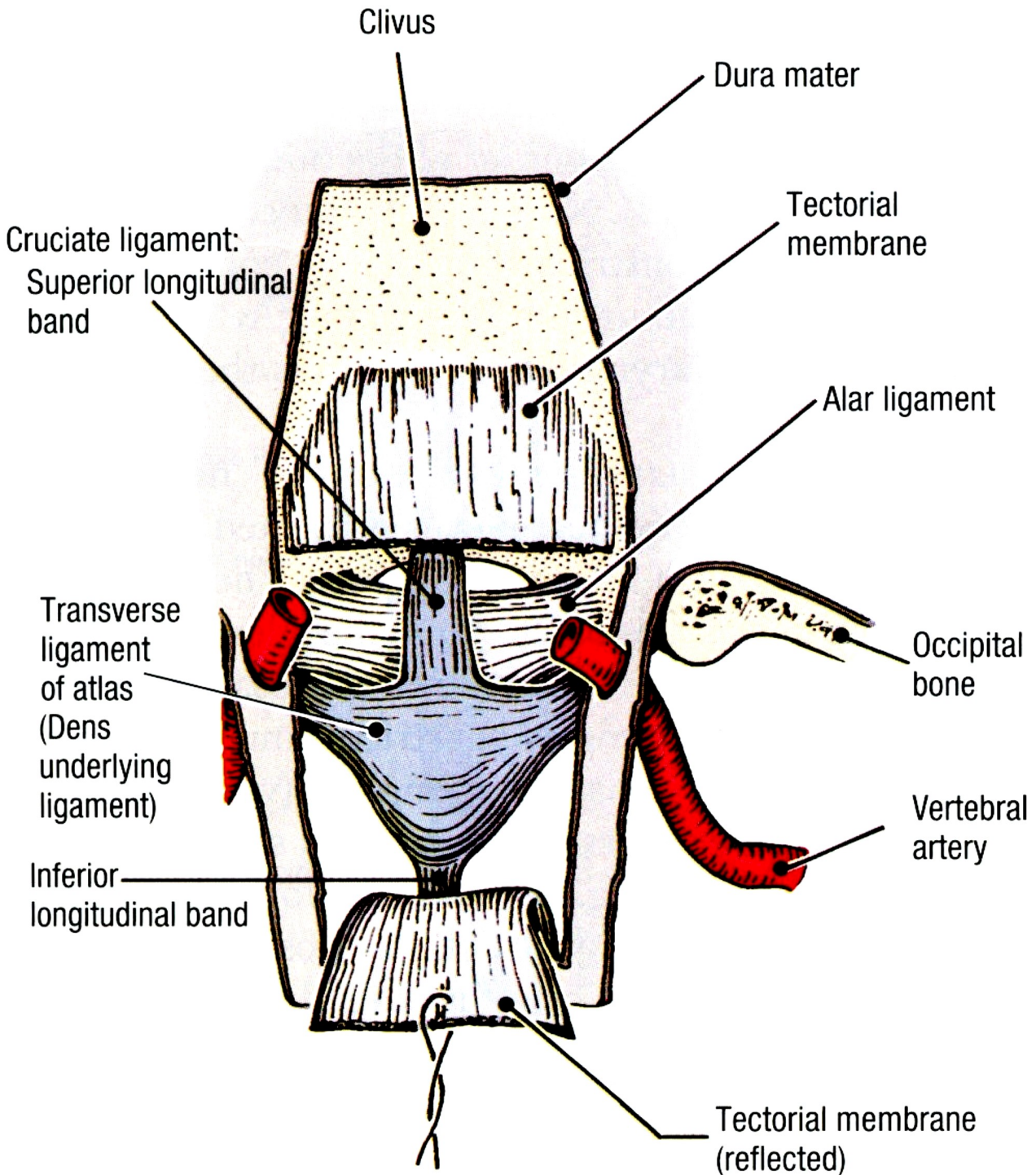


Figure 7.65. Atlantoaxial joint, posterior view.

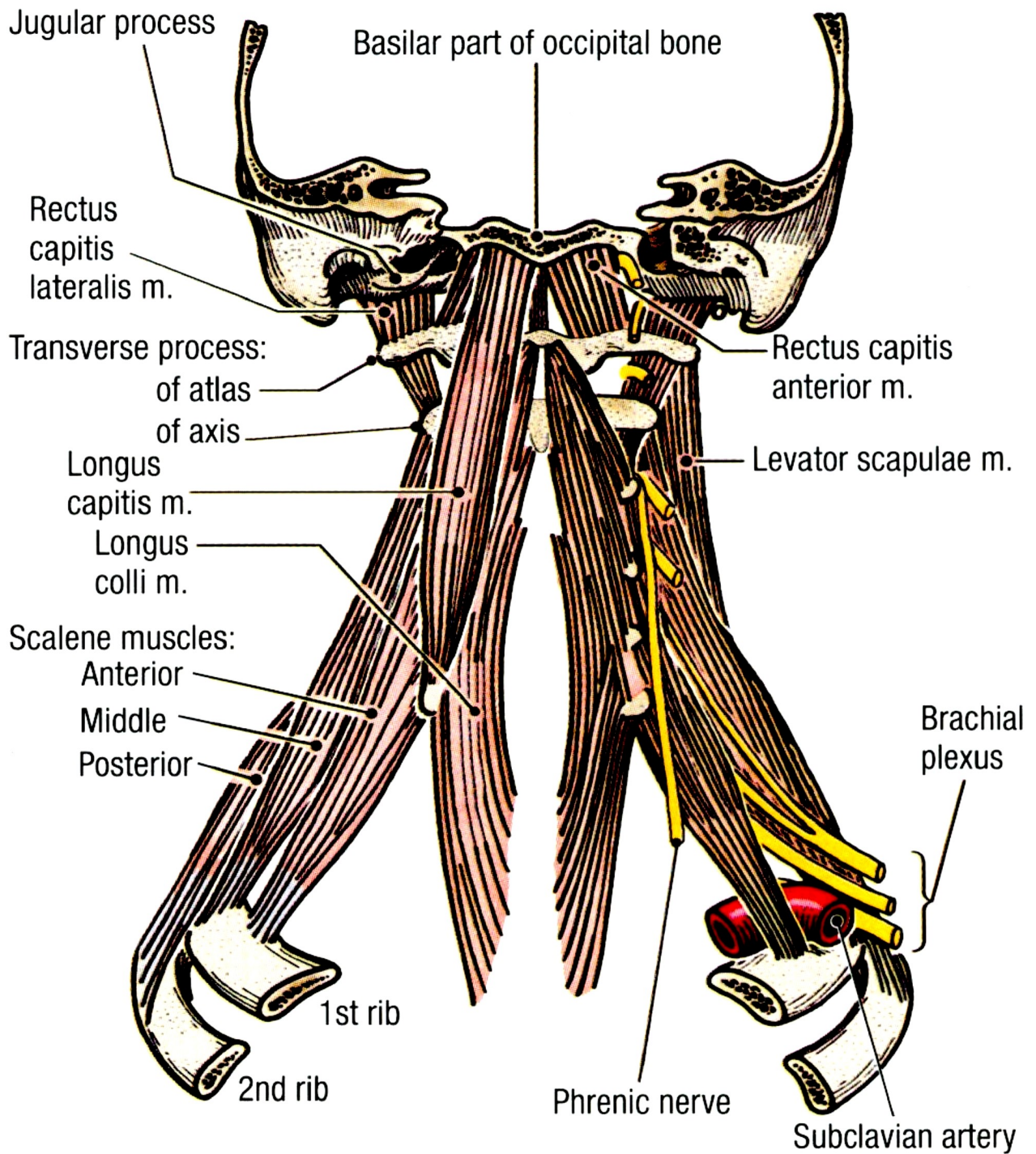


Figure 7.66. Prevertebral muscles.