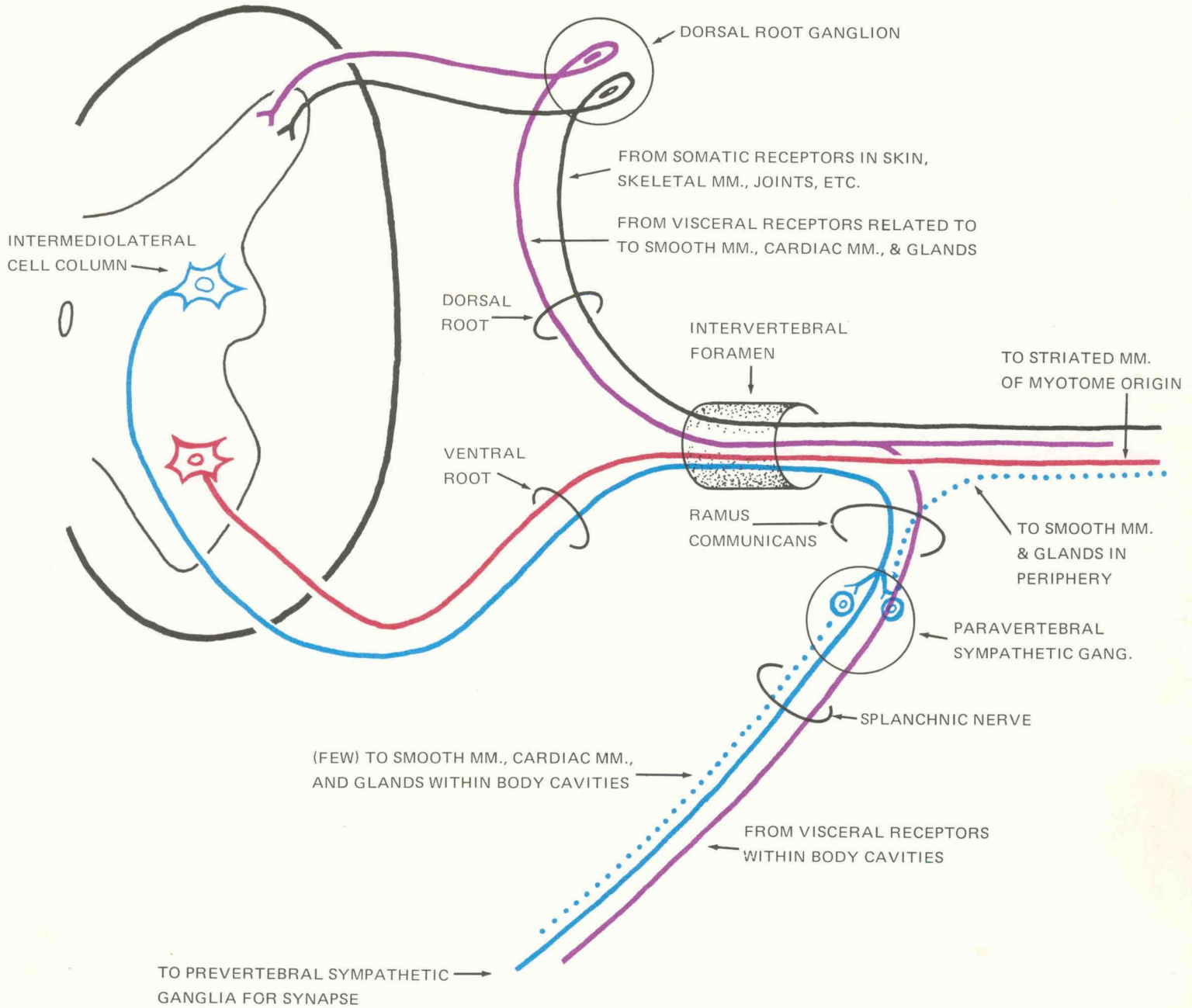


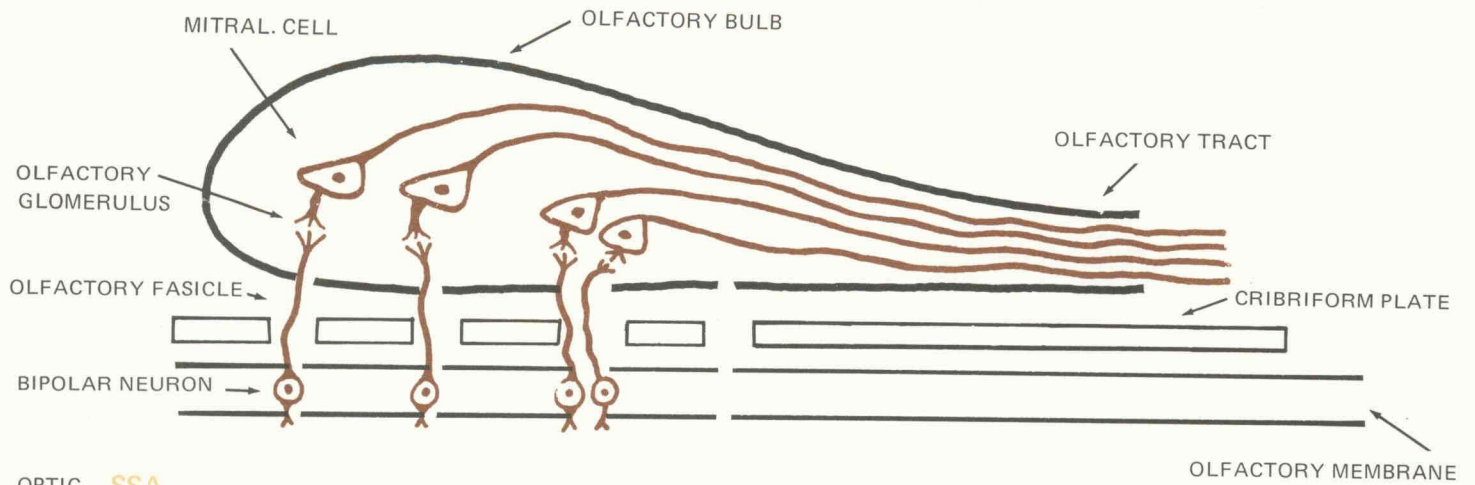
"TYPICAL" SPINAL NERVE (i.e. T₁L₂) *

GSA GVE GSE GVA

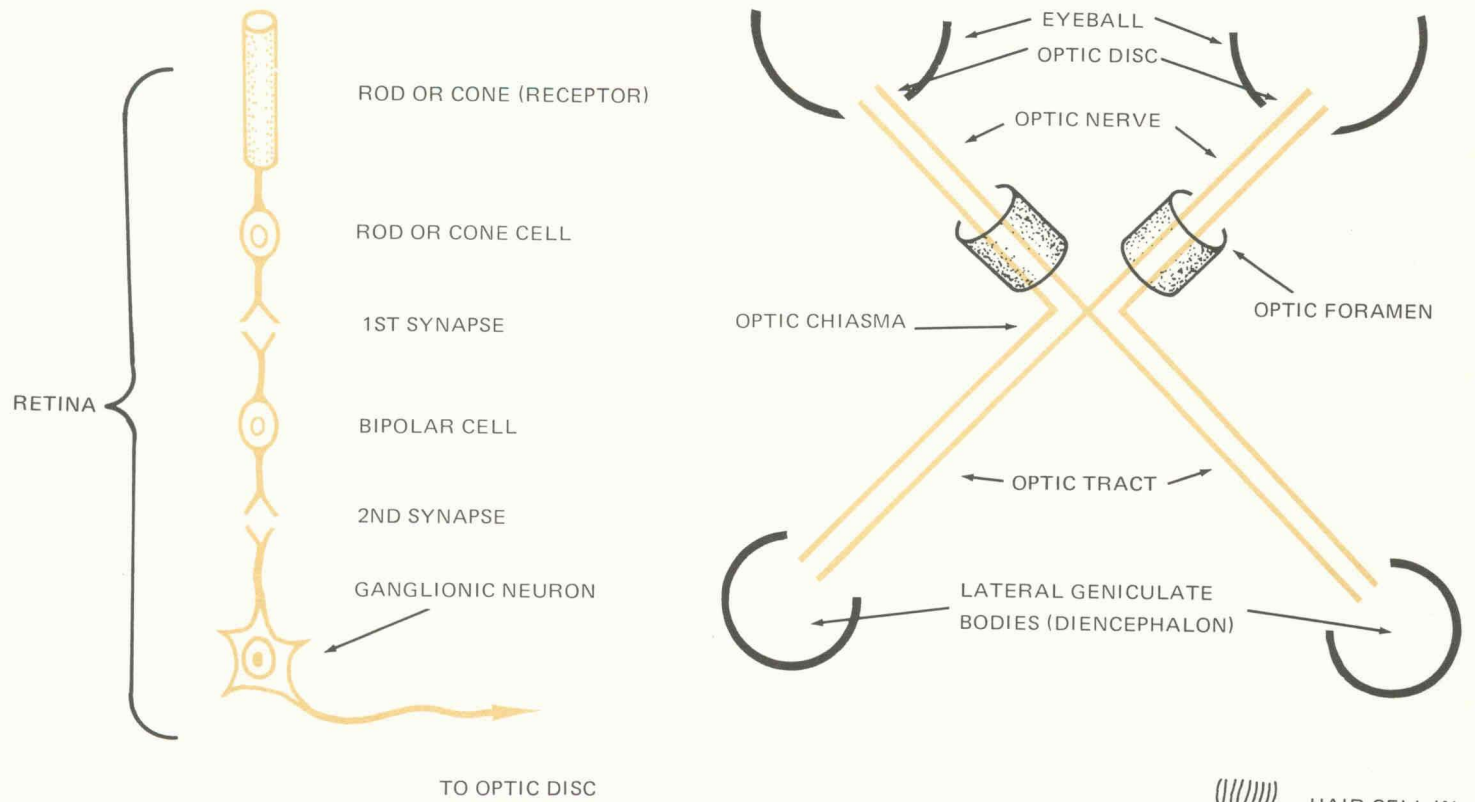


* ABOVE AND BELOW THESE LEVELS, PREGANGLIONIC GVE SYMPATHETIC CONTRIBUTION (SOLID BLUE) IS ABSENT; POSTGANGLIONIC SYMPATHETIC FIBERS (DOTTED BLUE) ENTER SEGMENTAL NERVES FROM SYMPATHETIC GANGLIA (VIA COMMUNICATING RAMI) AT ALL LEVELS. ONLY A FEW POSTGANGLIONIC FIBERS ARE TO BE FOUND IN ANY SPLANCHNIC NERVE; PREGANGLIONIC FIBERS ARE THE MAJOR EFFERENT COMPONENT.

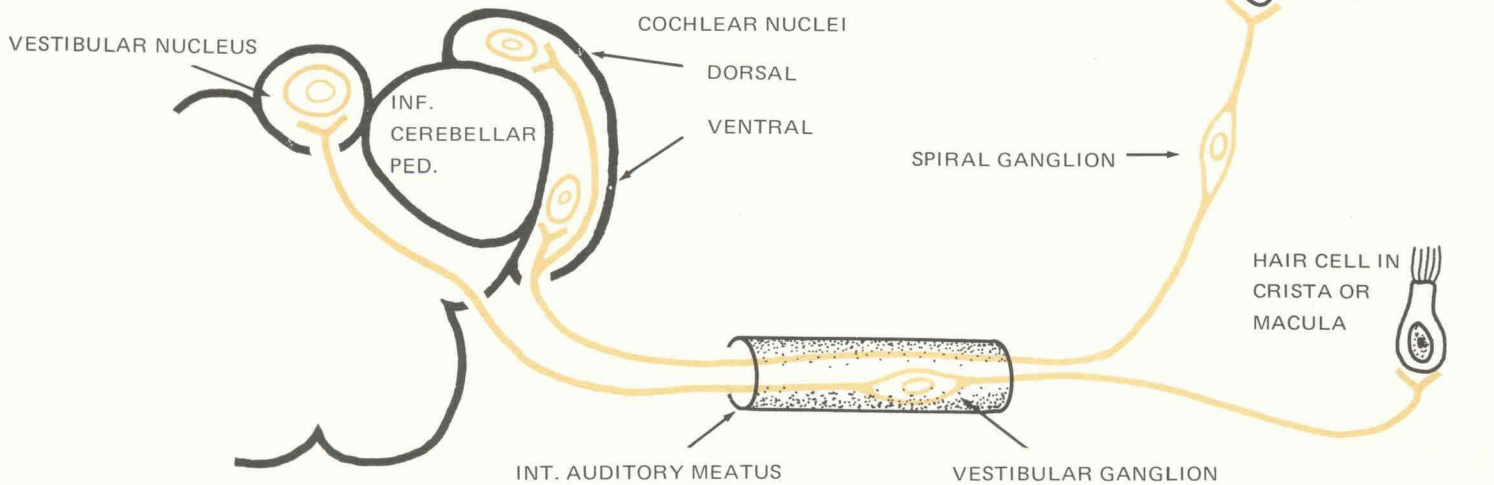
I. OLFACTORY SVA



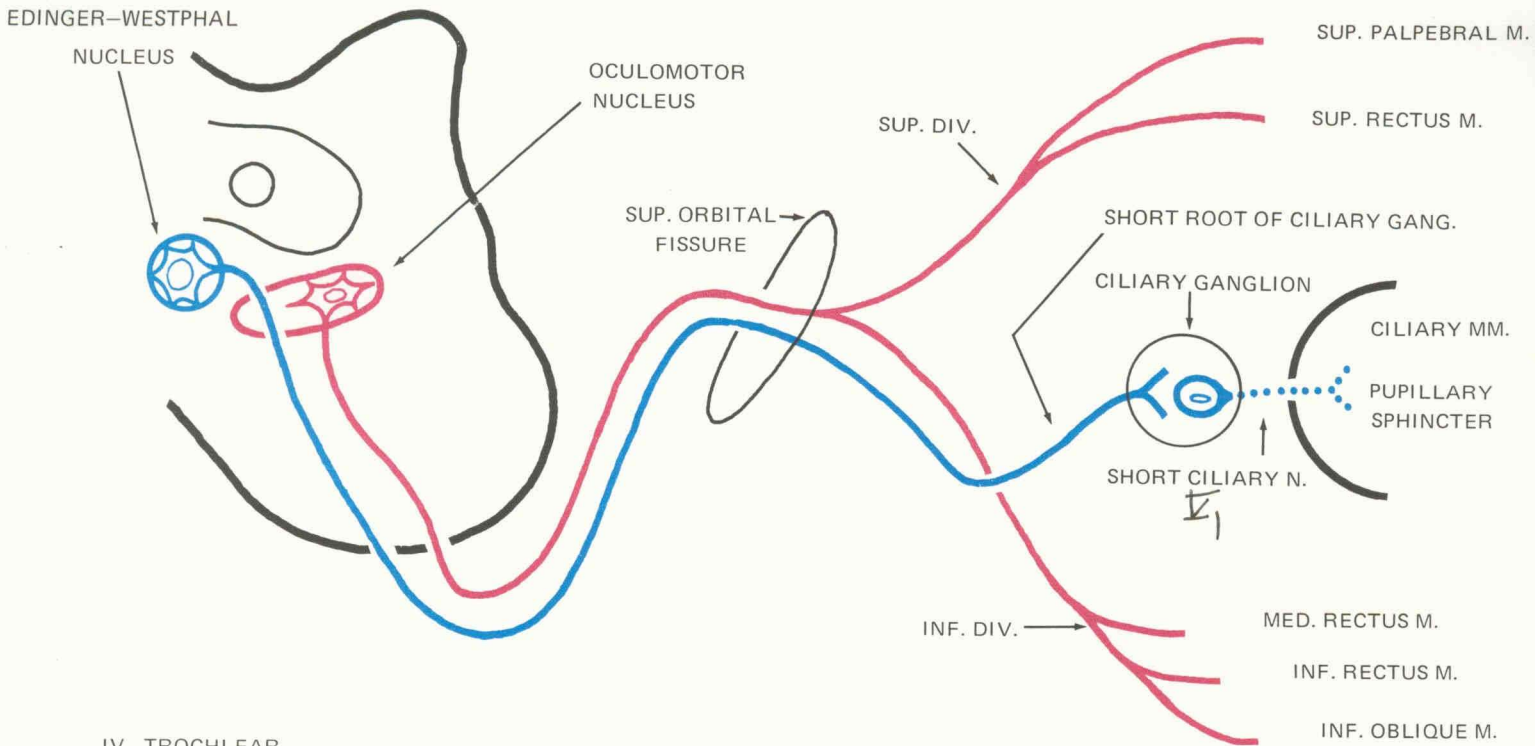
II. OPTIC SSA



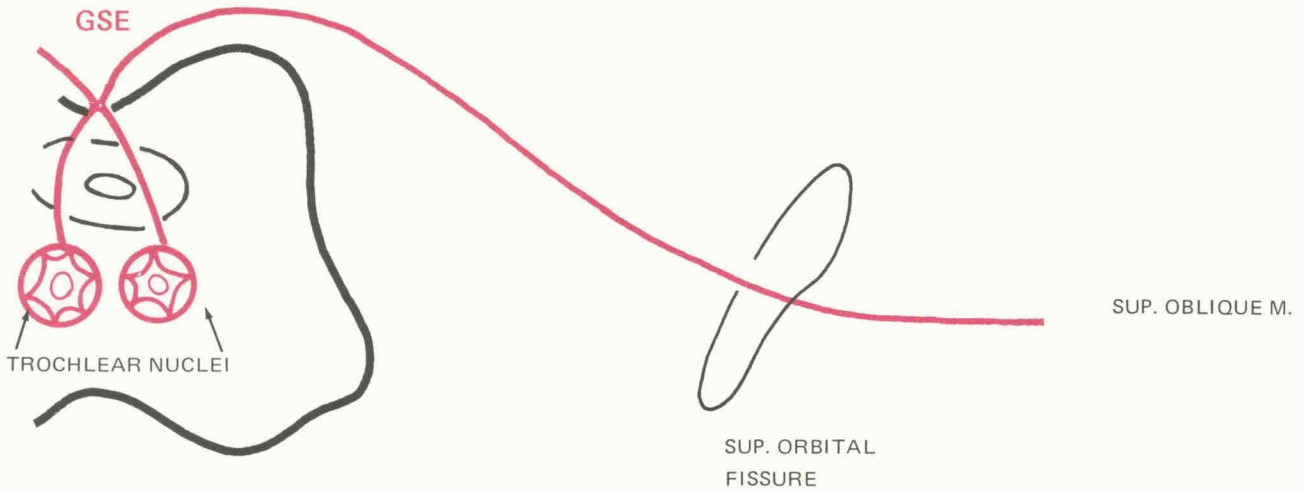
VII. VESTIBULOCOCHLEAR SSA



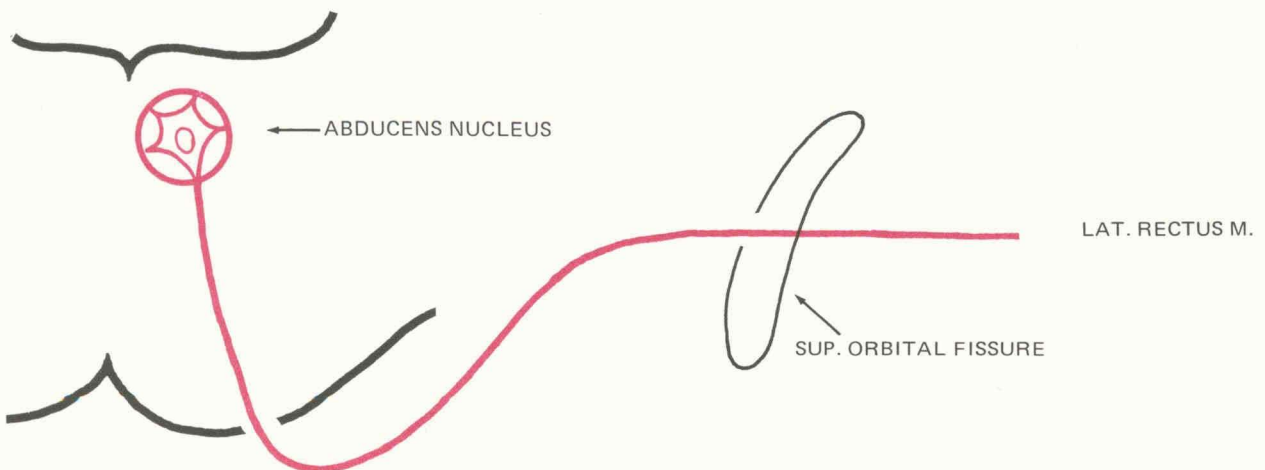
III OCULOMOTOR
GSE GVE



IV TROCHLEAR
GSE

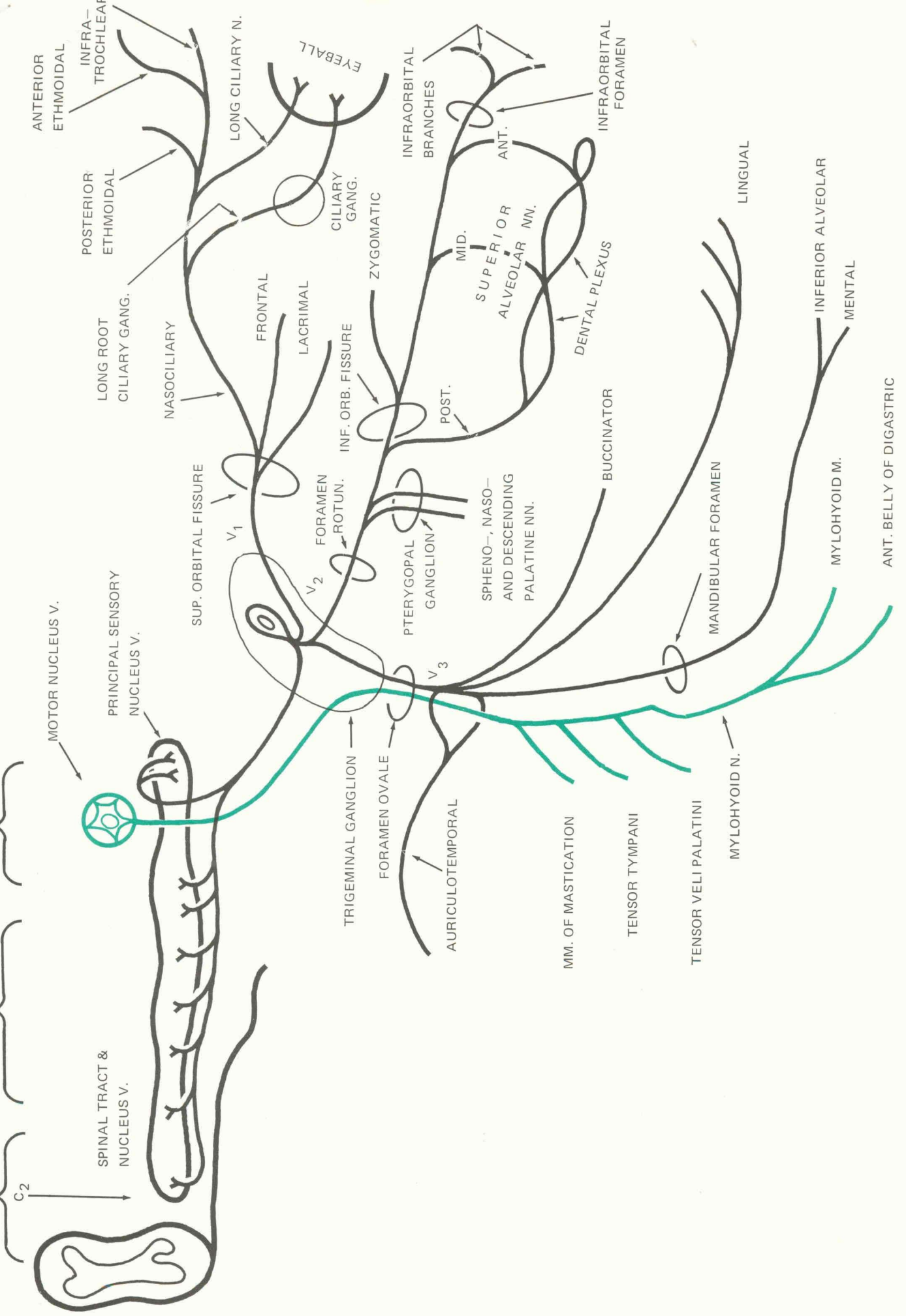


VI. ABDUCENS
GSE

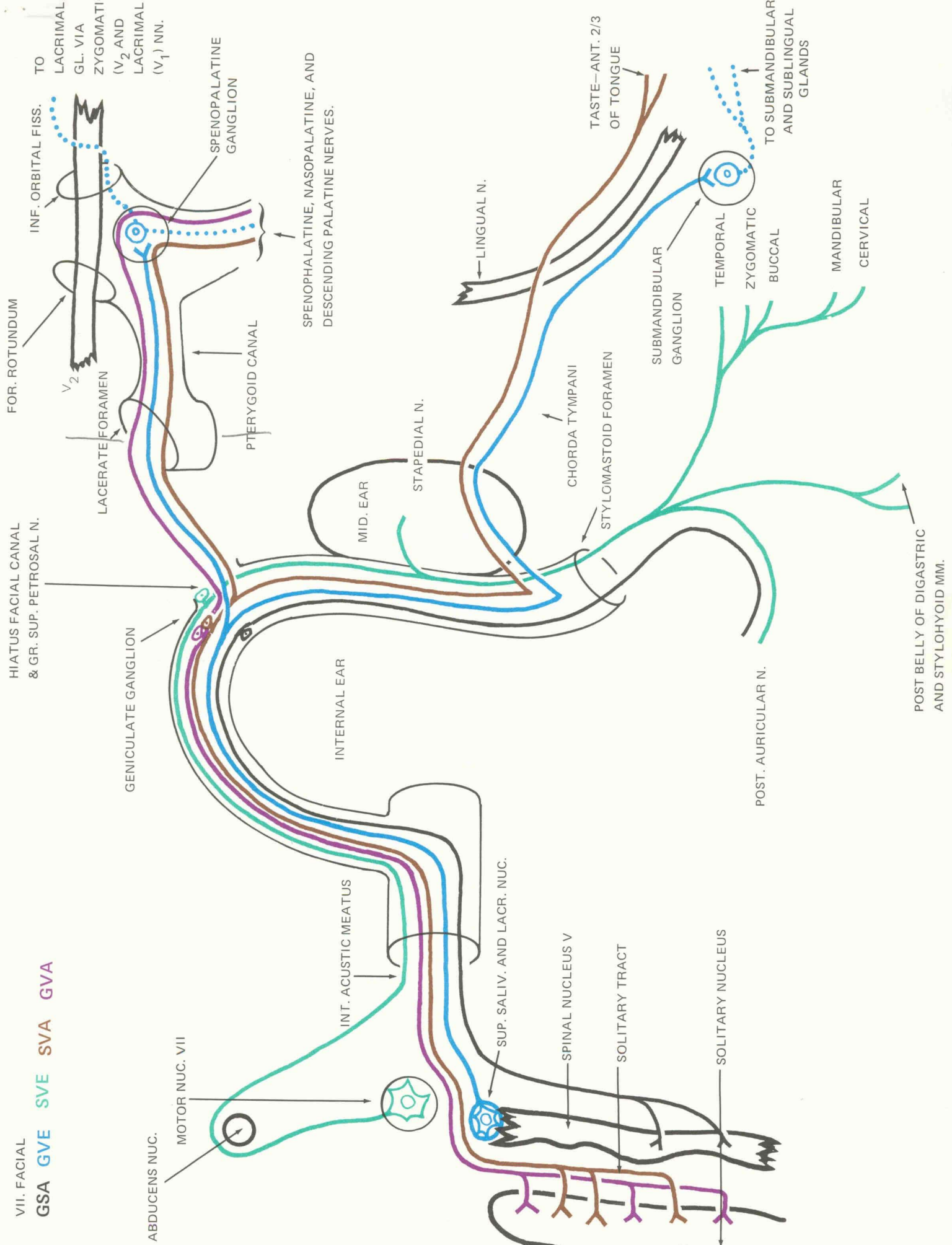


V. TRIGEMINAL
GSA SVE

SPINAL CORD MEDULLA PONS



VII. FACIAL
GSA GVE SVE SVA GVA



ABDUCENS NUC.

MOTOR NUC. VII

INT. ACUSTIC MEATUS

SUP. SALIV. AND LACR. NUC.

SPINAL NUCLEUS V

SOLITARY TRACT

SOLITARY NUCLEUS

INTERNAL EAR

MID. EAR

STAPEDIAL N.

CHORDA TYMPANI

STYLOMASTOID FORAMEN

POST. AURICULAR N.

POST BELLY OF DIGASTRIC
 AND STYLOHYOID MM.

HIATUS FACIAL CANAL
 & GR. SUP. PETROSAL N.

GENICULATE GANGLION

LACERATE FORAMEN

V₂

FOR. ROTUNDUM

INF. ORBITAL FISS.

TO LACRIMAL
 GL. VIA
 ZYGOMATIC
 (V₂) AND
 LACRIMAL
 (V₁) NN.

SPENOPALATINE
 GANGLION

PTERYGOID CANAL

SPENOPALATINE, NASOPALATINE, AND
 DESCENDING PALATINE NERVES.

LINGUAL N.

TASTE—ANT. 2/3
 OF TONGUE

SUBMANDIBULAR
 GANGLION

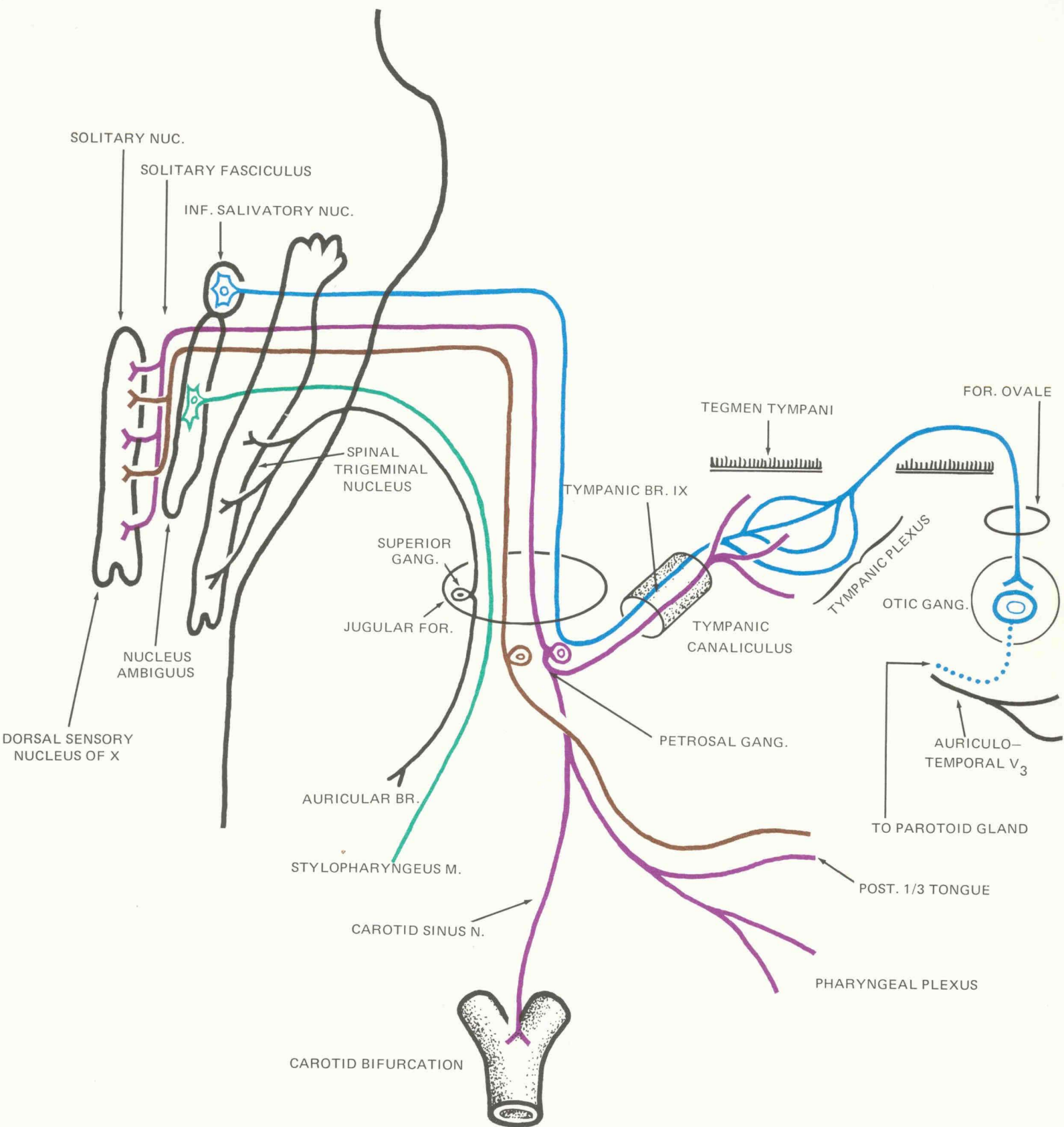
TEMPORAL
 ZYGOMATIC
 BUCCAL

TO SUBMANDIBULAR
 AND SUBLINGUAL
 GLANDS

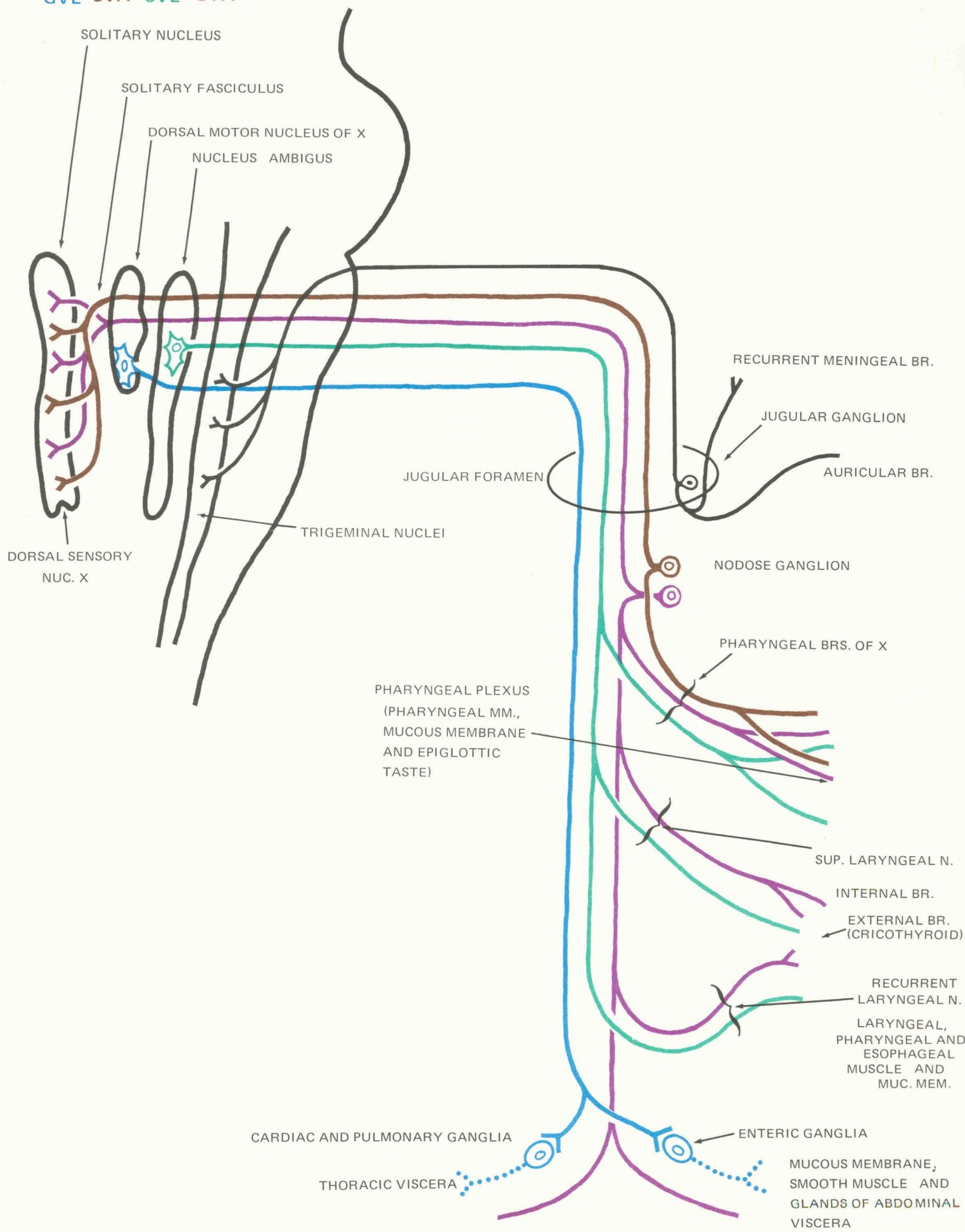
MANDIBULAR
 CERVICAL

IX. GLOSSOPHARYNGEAL

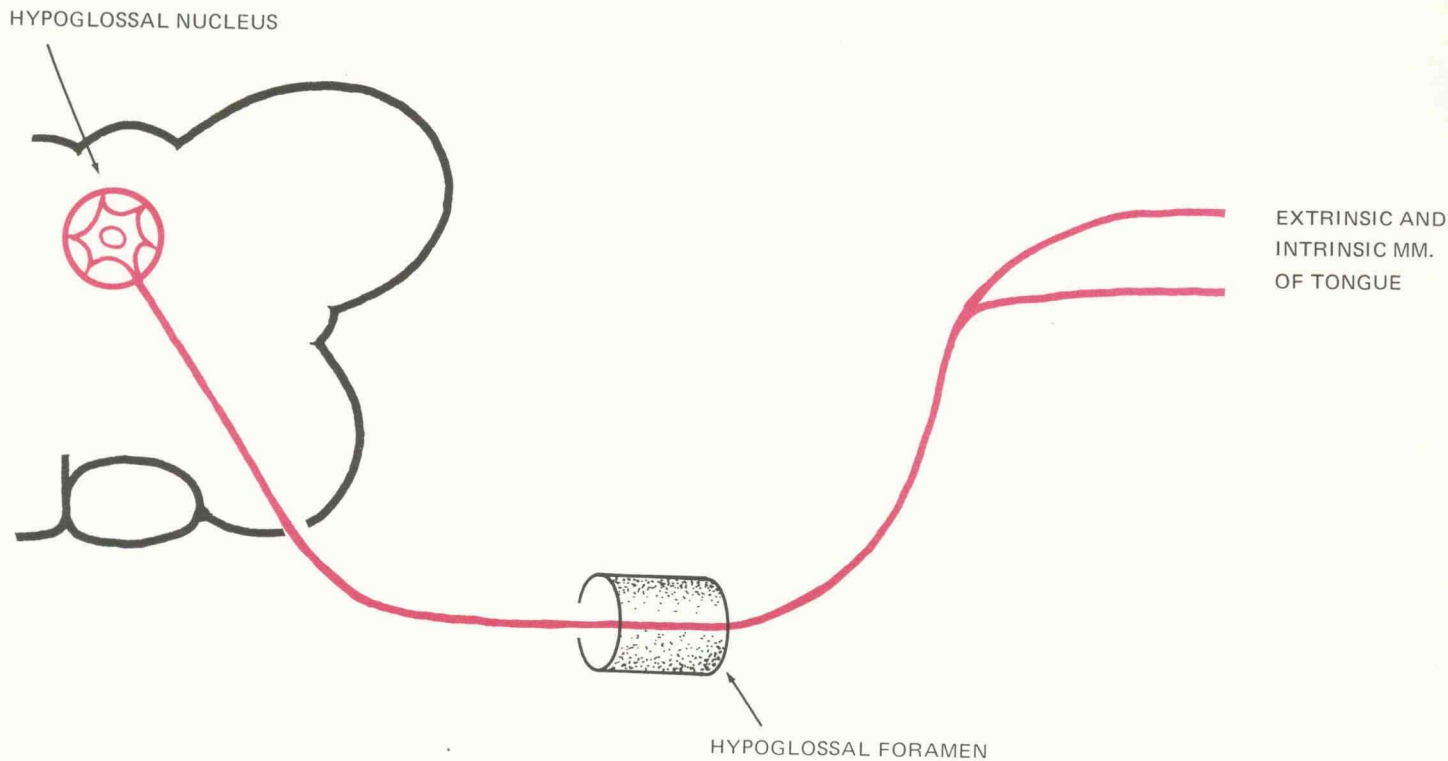
GSA GVA GVE SVA SVE



VAGUS
 GSA GVE SVA SVE GVA



XII. HYPOGLOSSAL GSE



XI. ACCESSORY SVE

